

## GWGDG AND SNSB

Sven Bingert<sup>1</sup>, Anton Link<sup>2</sup>, Tanja Weibulat<sup>2,3</sup>, Dagmar Triebel<sup>2</sup>

<sup>1</sup>GWGDG, <sup>2</sup>SNSB IT Center, <sup>3</sup>GFBio e.V.

## GFBIO SINGLE-SIGN-ON

The GWGDG is an infrastructure and services provider for science. With its mission, it is offering services to the GFBio Community and supports the development of NFDI. Together with the SNSB developing and delivering Diversity Workbench (DWB) software, a cloud-based service featuring browser-based individual access to a DWB virtual working environment was developed (fig. 1). The approach is comfortable because the users avoid local software installations and administration with admin rights, and are prevented from data loss due to cloud based storage and automated backups.

The virtual environment provides an easy access for beginners and scientists with small research projects to learn about the strength of the Diversity Workbench data management system.

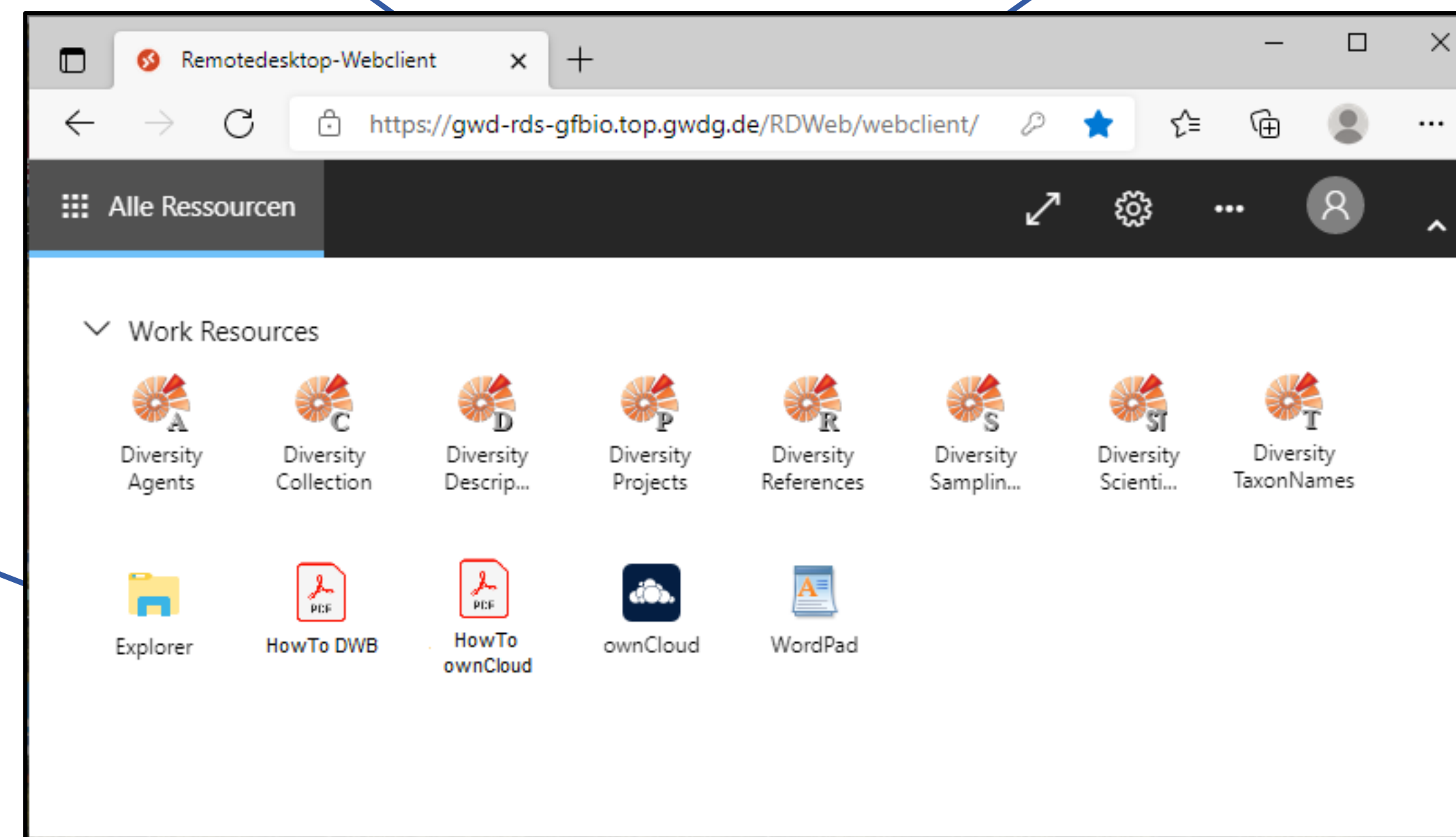


Figure 1: DWB virtual working environment as SaaS at the GWGDG

The DWB virtual working environment as SaaS is usable with your personal SSO GFBio account (fig. 4) together with a special access assignment for the DWB environment (fig. 5, request via GFBio Helpdesk).

A GFBio account gives access to many GFBio and NFDI4Biodiversity services!

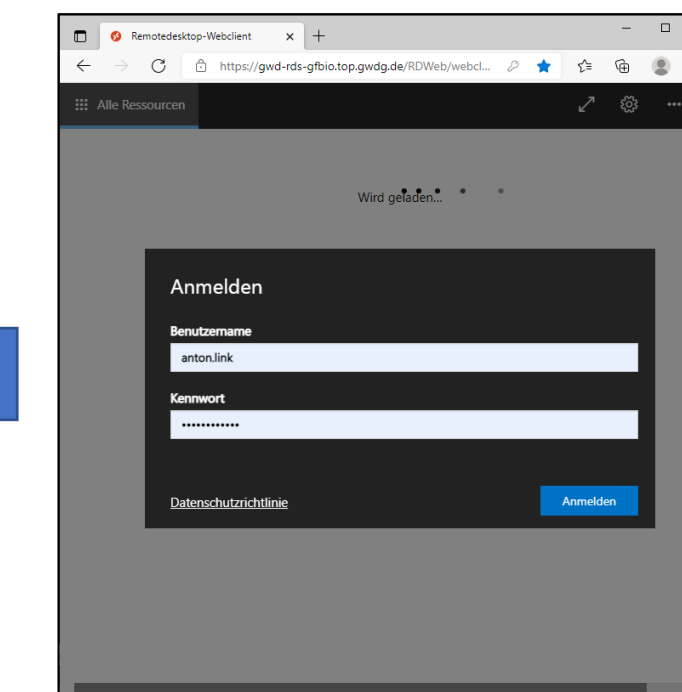


Figure 4: Login to the DWB-GWGDG environment

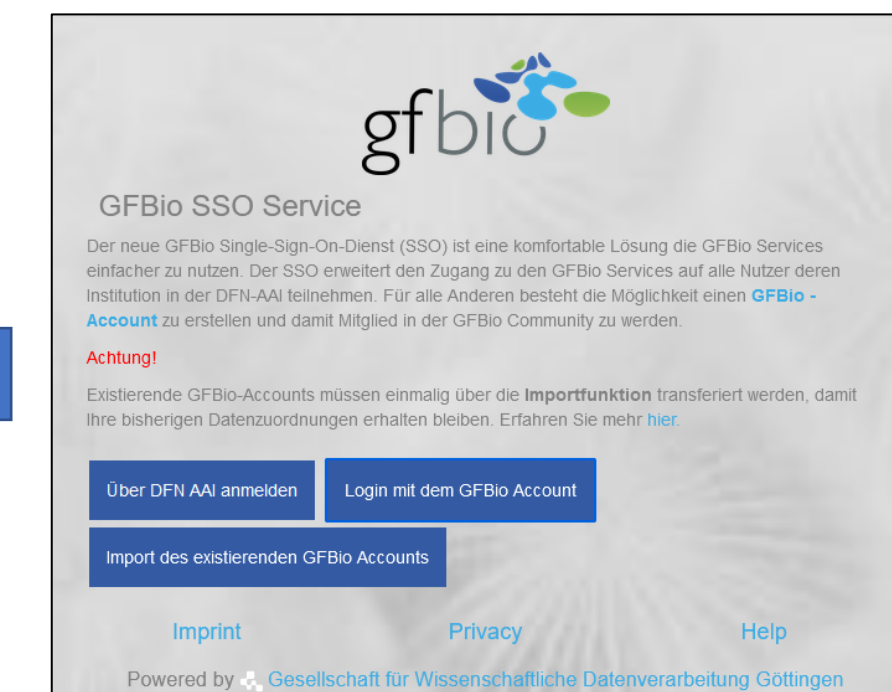


Figure 5: Login to the GFBio portal

## SOFTWARE AS A SERVICE

The SaaS model supplies a traditional software installation model by hosting the software, maintaining and managing it on favor of delivering cloud-based applications via internet. The DWB-GWGDG SaaS includes eight hosted DWB clients (fig. 1, 2), hosted MS SQL databases and provides access to the GWGDG Cloud storage service. For enhanced use, additional services are or can be included (fig. 1).

## DWB CLIENTS AND TRAINING DATA

The DWB-GWGDG work resource databases include by default a rich set of real-life examples and training data (fig. 2). The software will be regularly updated by new version releases with starting scripts set up by the SNSB GWGDG technical cooperation.

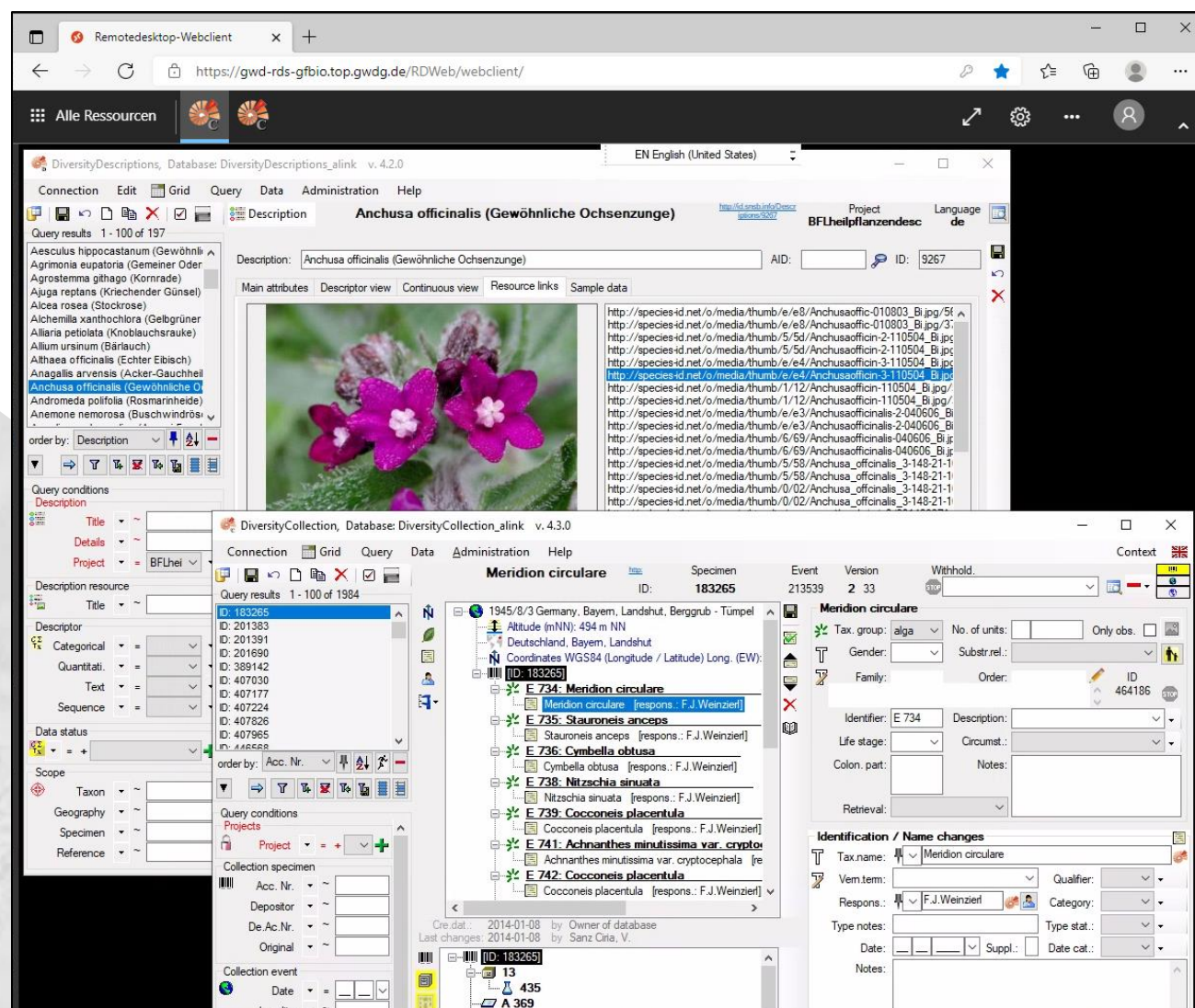


Figure 2: Two DWB clients accessed via DWB-GWGDG with training data

## DWB ENVIRONMENT AND CONNECTIONS

With the DWB-GWGDG cloud services the users are able to organise connections (fig. 3) to their individual GWGDG-local training respective productive working environment as well as to remote DWB databases, e.g., with DiversityTaxonNames (DTN) backbones, terminologies and gazetteers. This allows for multiple usage scenarios.

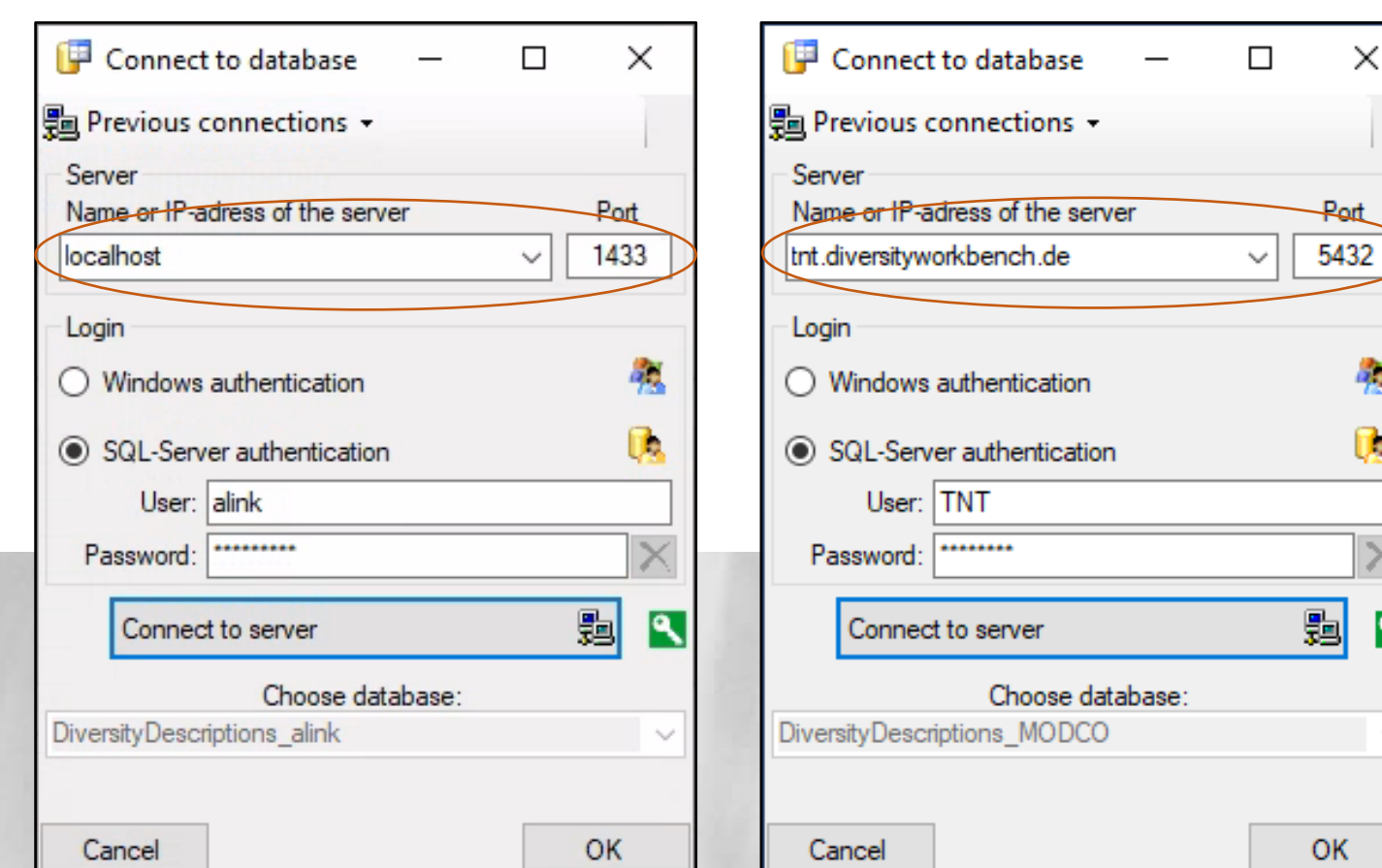


Figure 3: Connection to various DWB instances and databases.

## GFBIO CORE SERVICE

The DWB (homepage: [www.diversityworkbench.net](http://www.diversityworkbench.net)) is part of the GFBio and NFDI4Biodiversity Services portfolio. It is one of the workbenches recommended by the DFG and described in the GFBio portal (fig. 6).

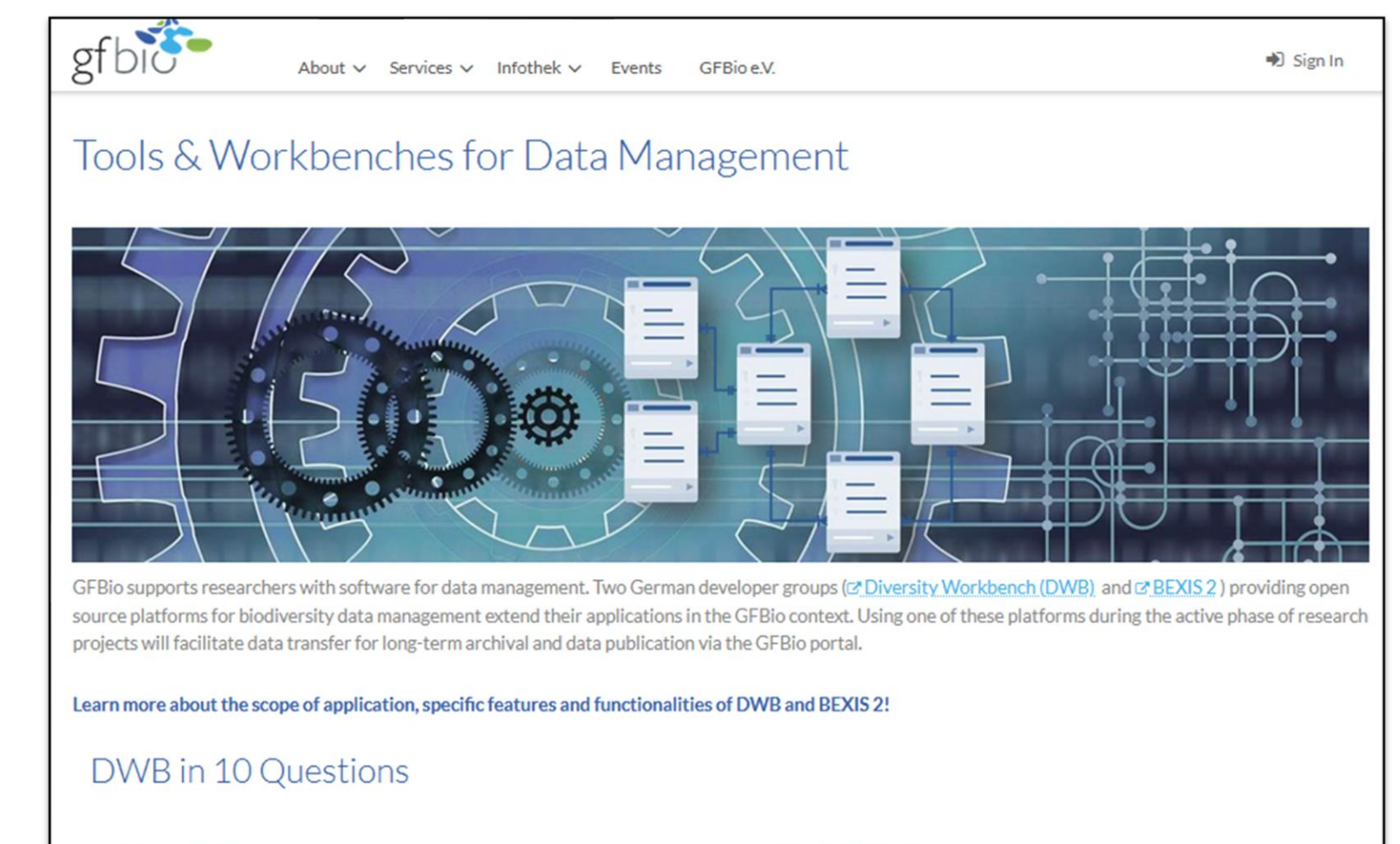


Figure 6: DWB in 10 Questions (<https://www.gfbio.org/tools>)